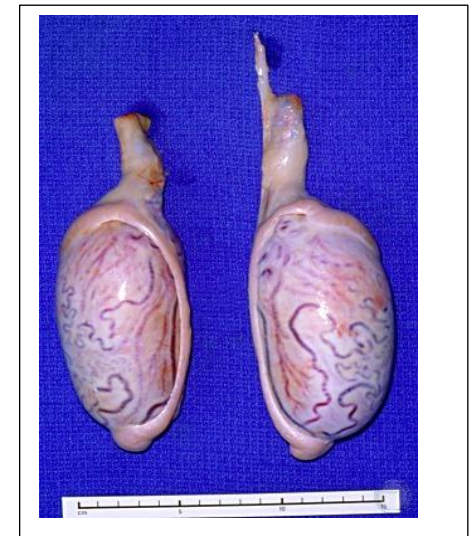


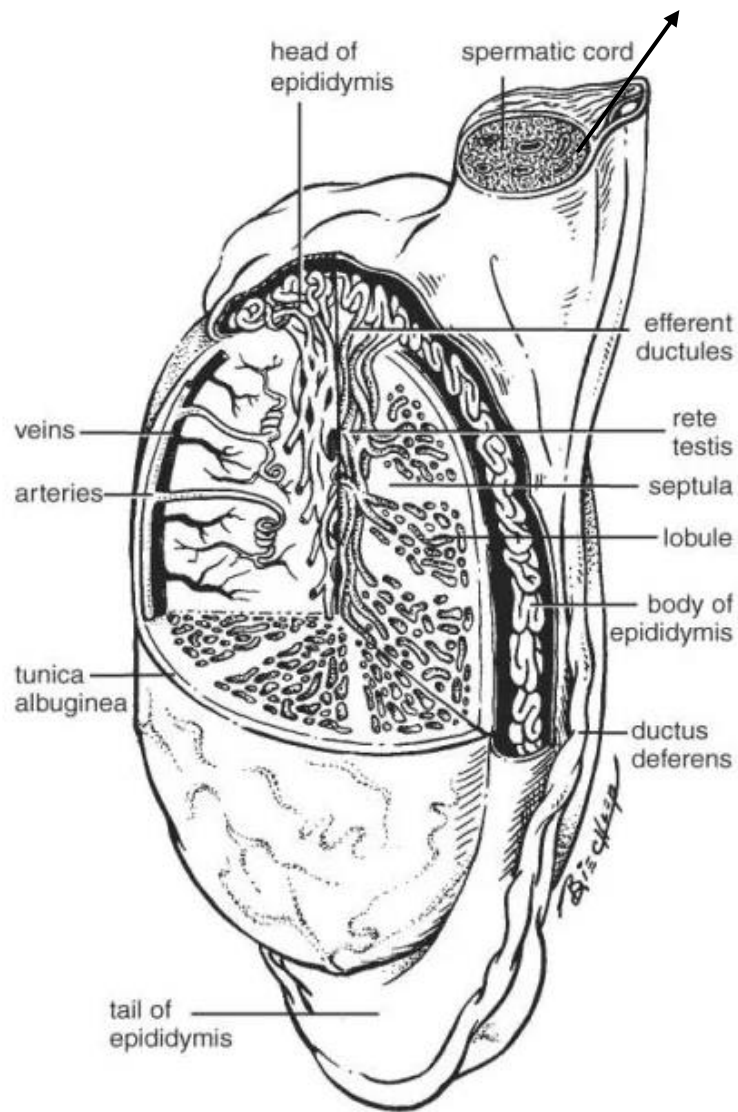
The Bull Reproductive Tract

- Testes are oval shaped testes with a long vertical axis
- Spermatic cords begins at the deep inguinal ring and attaches to the border of the testes
- Long in bulls (ruminants)



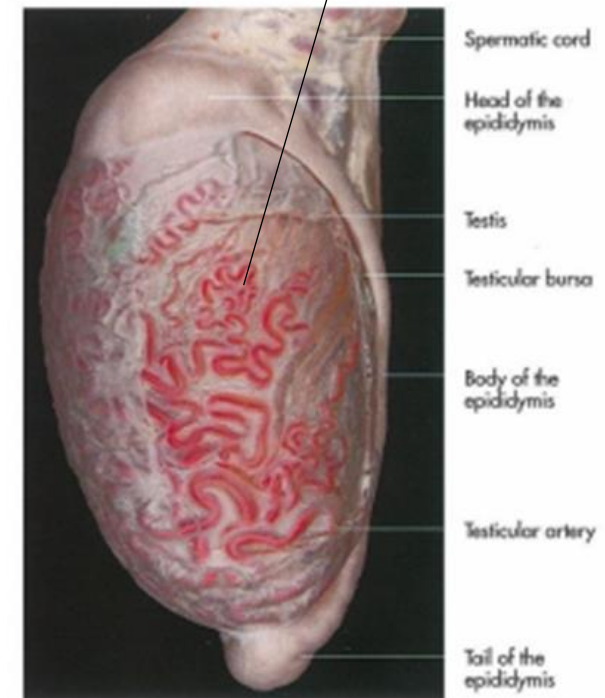
The Spermatic Cord contains:

- Vascular structures : Testicular arteries, Testicular veins (which form pampiniform plexus), Testicular plexus of autonomic nerves and lymphatic drainage (to medial iliac lymph node)
- Avascular structures : Ductus deferens, connective tissue, cremaster internus muscle



The testicular artery:

- A branch of abdominal aorta.
- Extremely convoluted.
- Branches are extended which supply epididymis



Autonomic innervation of testes – renal and caudal mesenteric plexuses