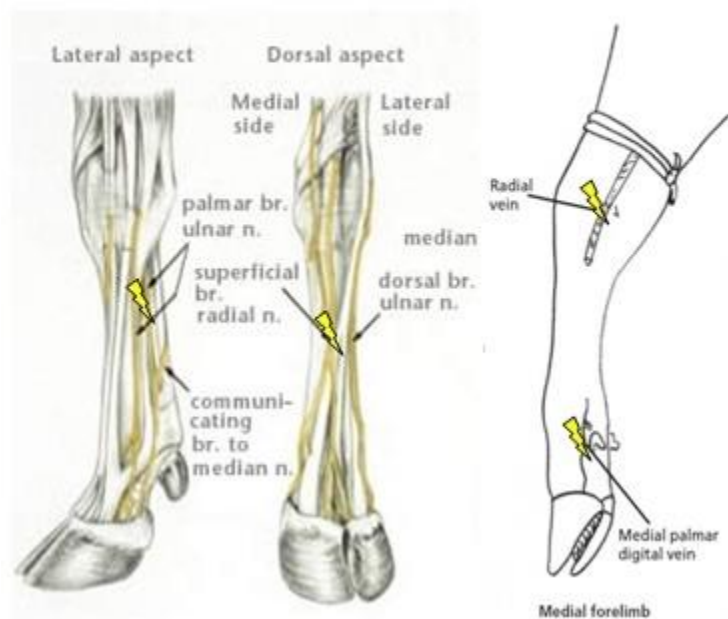


Limbs

Forelimb

Anatomical Location

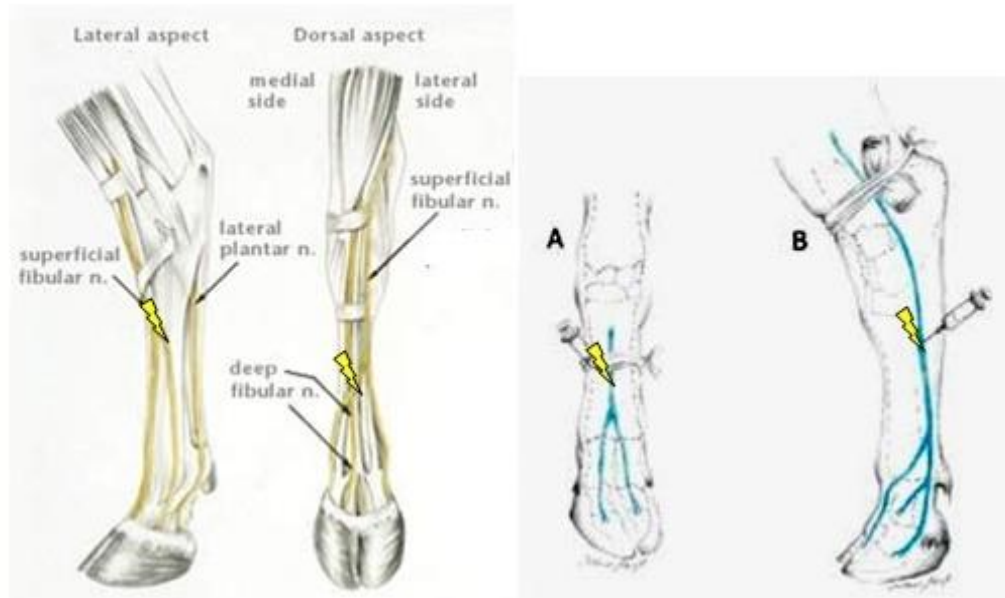


Location of Injection in the Thoracic Limb:

The cephalic vein and dorsal digital vein **to block the Tibial Nerve.**

Hind limb

Anatomical Location



Location of Injection in the Pelvic Limb:

Lateral saphenous vein and lateral plantar digital vein **to block Fibular (peroneal) nerve.**