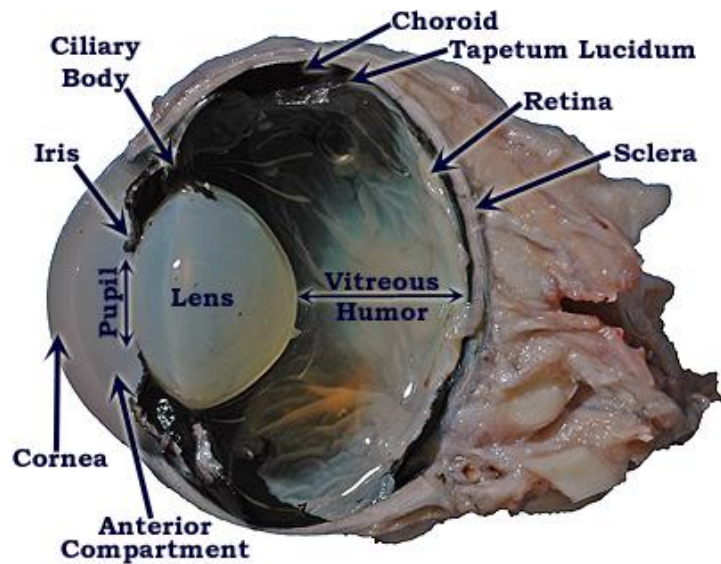


Bovine Eye Removal Surgery

Anatomy



Picture 1: Image showing a sagittal section through a bovine eye and the structures within the eye

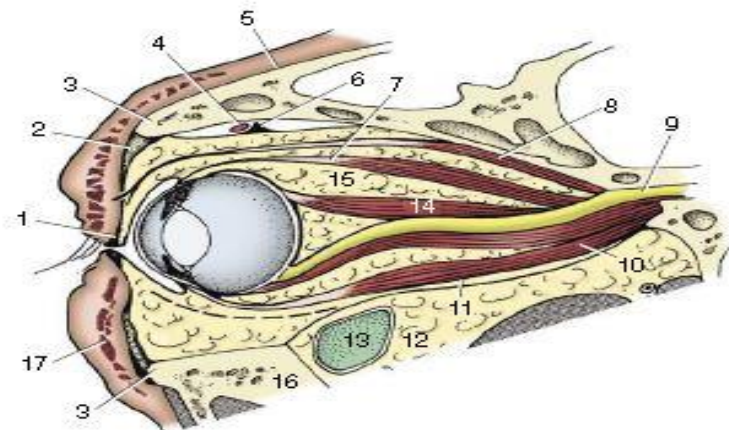
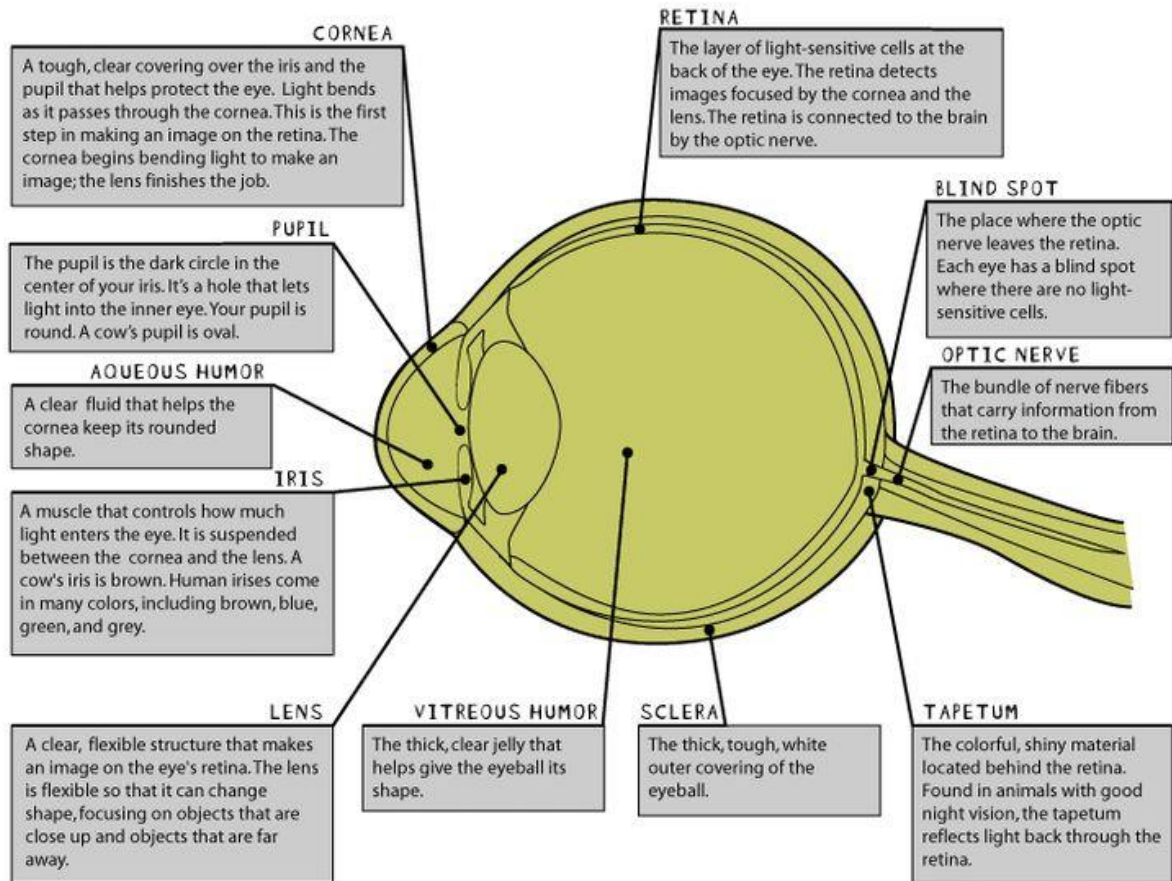


Figure 9-17 Right bovine eye cut along orbital axis, rostro-medial surface. 1, Tarsus; 2, orbital septum; 3, orbital margin; 4, dorsal oblique muscle; 5, periosteum of face; 6, trochlea; 7, dorsal rectus muscle; 8, levator palpebrae superioris; 9, optic nerve in optic foramen; 10, ventral rectus muscle; 11, periorbita; 12, extraperiorbital fat; 13, lacrimal bulla, a caudal recess of the maxillary sinus; 14, retractor bulbi; 15, intraperiorbital fat; 16, zygomatic arch; 17, orbicularis.

Picture 2: Image showing a right bovine eye cut along the orbital axis showing the bones and muscles associated with the orbit



Picture 3: Image showing an explanation of each structure of the eye