

VENTRICULOCORDECTOMY

Laser Ventriculectomy/Ventriculocordectomy

The laser fibre is placed through the biopsy channel of the flexible endoscope and the endoscope placed into the nasal passage of the horse (Figure 11.2*G*). The laser is set at 15 watts, and the laser fibre extended through the end of the scope. The laser should never be fired if the fibre tip is not easily seen on the monitor. Because the fibre lasers create significant collateral damage, only the surface mucosa need be ablated (Figure 11.2*H*). In many instances, both ventricles are ablated along with the vocal cords to minimize noise after surgery. Care should be taken to avoid lasering the most ventral commissure of the vocal folds to reduce the chance of cicatrix formation. There is no laryngotomy incision to care for using this approach.

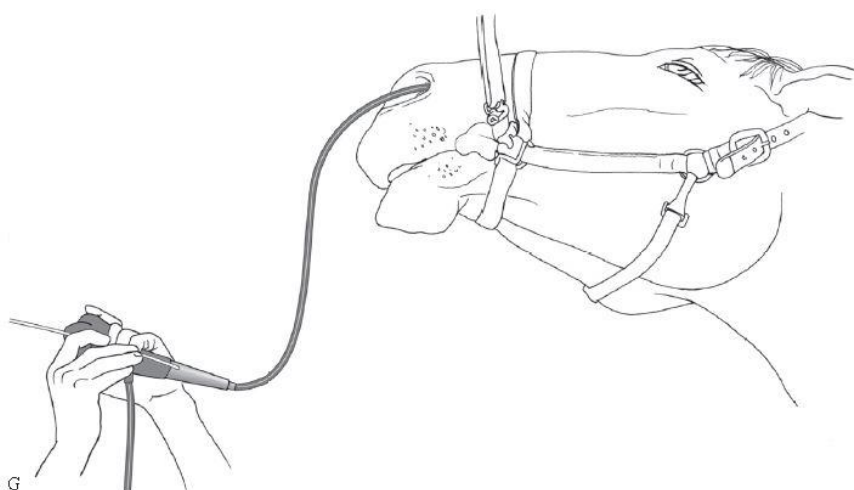


Fig. 11.2. Continued.

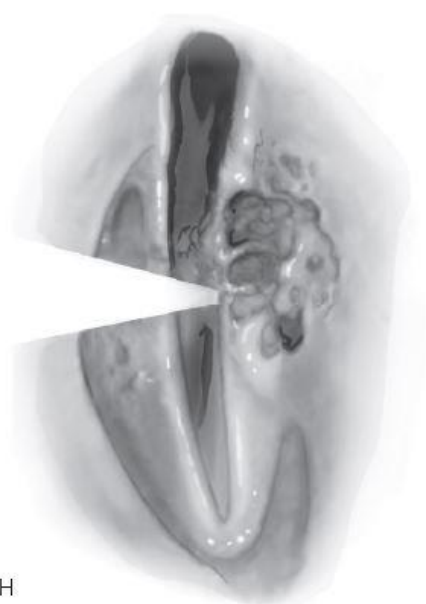


Fig. 11.2. Continued.