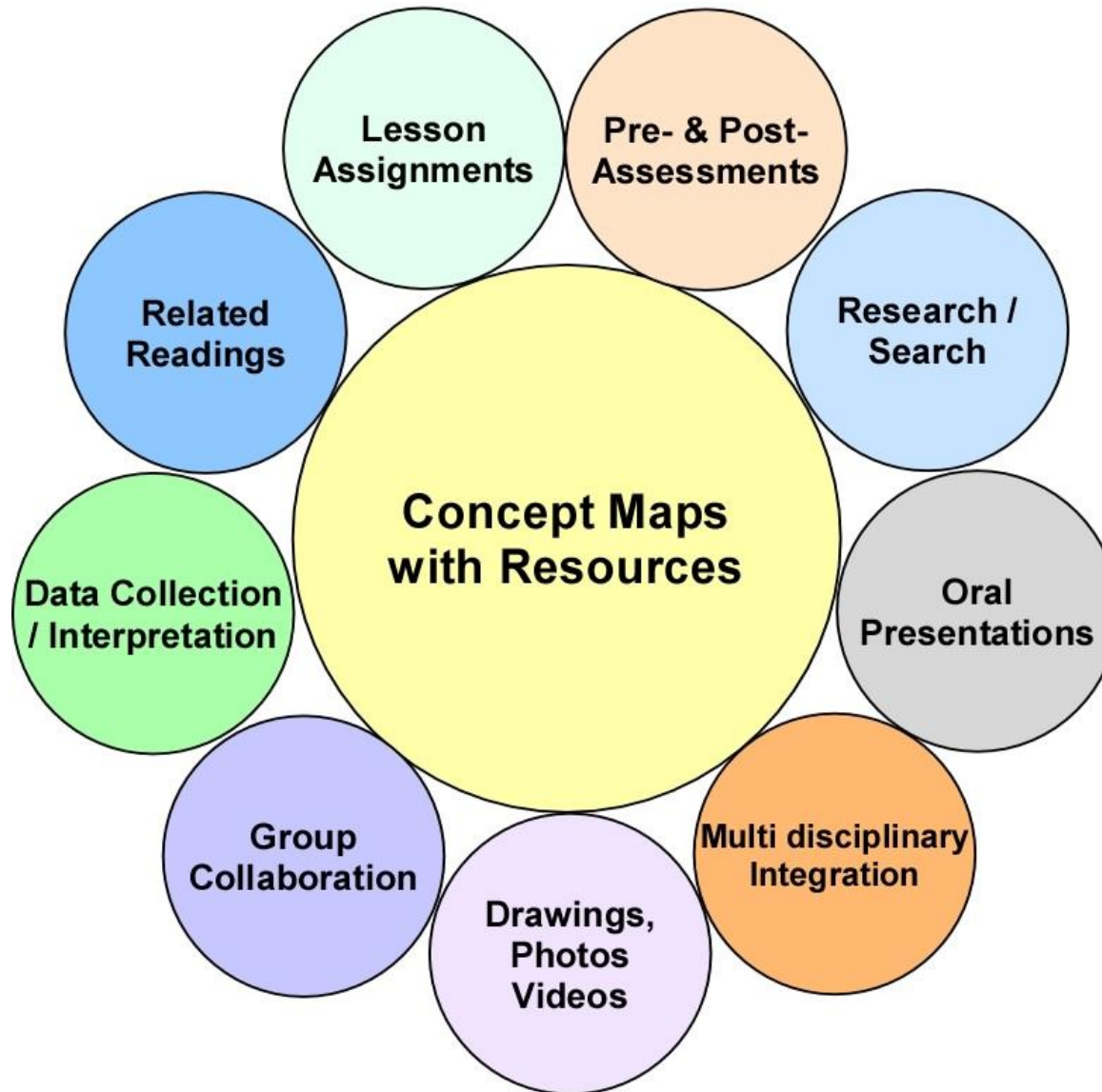
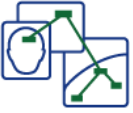


A Concept Map-Centered Model

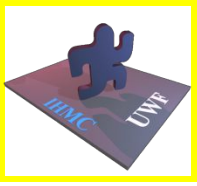




Instituto Educativo Integral: a concept map-centered model

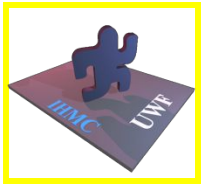
- Subsidized, semi-private High School in Costa Rica
- Accepts students that, because of their cognitive styles, have difficulties adapting to regular schools
- Adopted CmapTools in all courses
- Laptops, but not 1:1





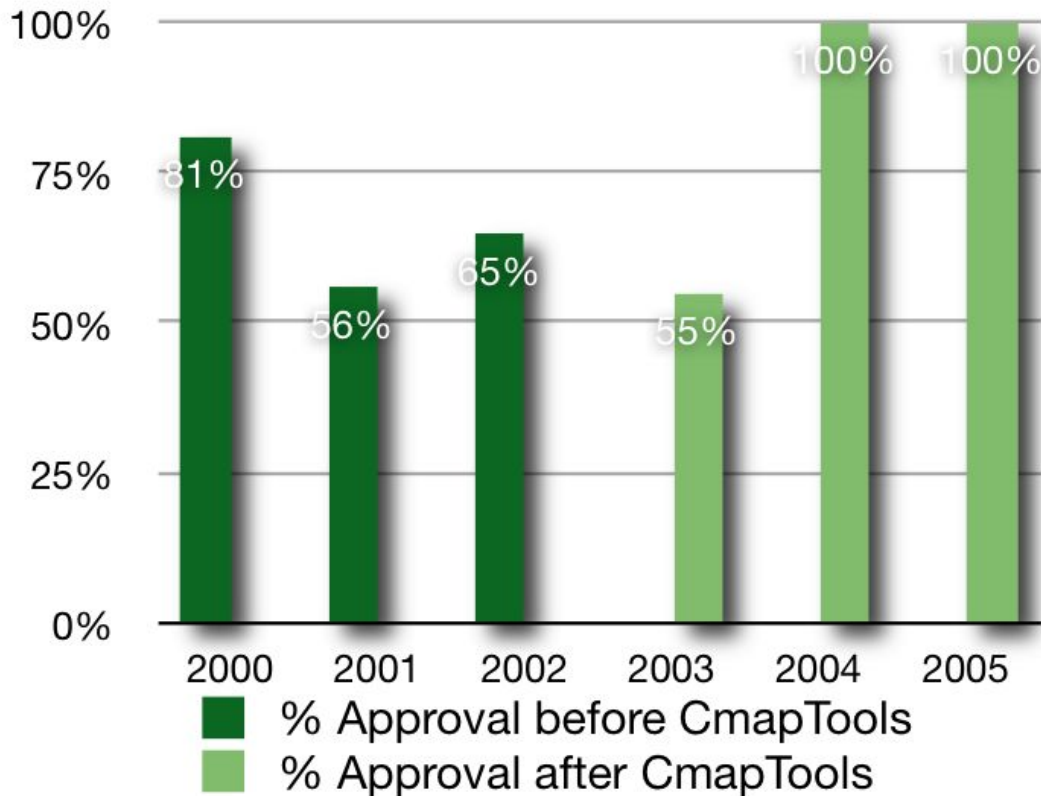
Instituto Educativo Integral: a concept map-centered model





Instituto Educación Integral (High School), Costa Rica

Approval Rate, National High School Graduation Exams



O. Silesky, C. Chacón, O. Muñoz, E Rodríguez, C. Segura, *Mapas Conceptuales: Una Experiencia para la Atención de la Diversidad en el Instituto de Educación Integral*, submitted to 2nd International Conference on Concept Mapping, 2006.